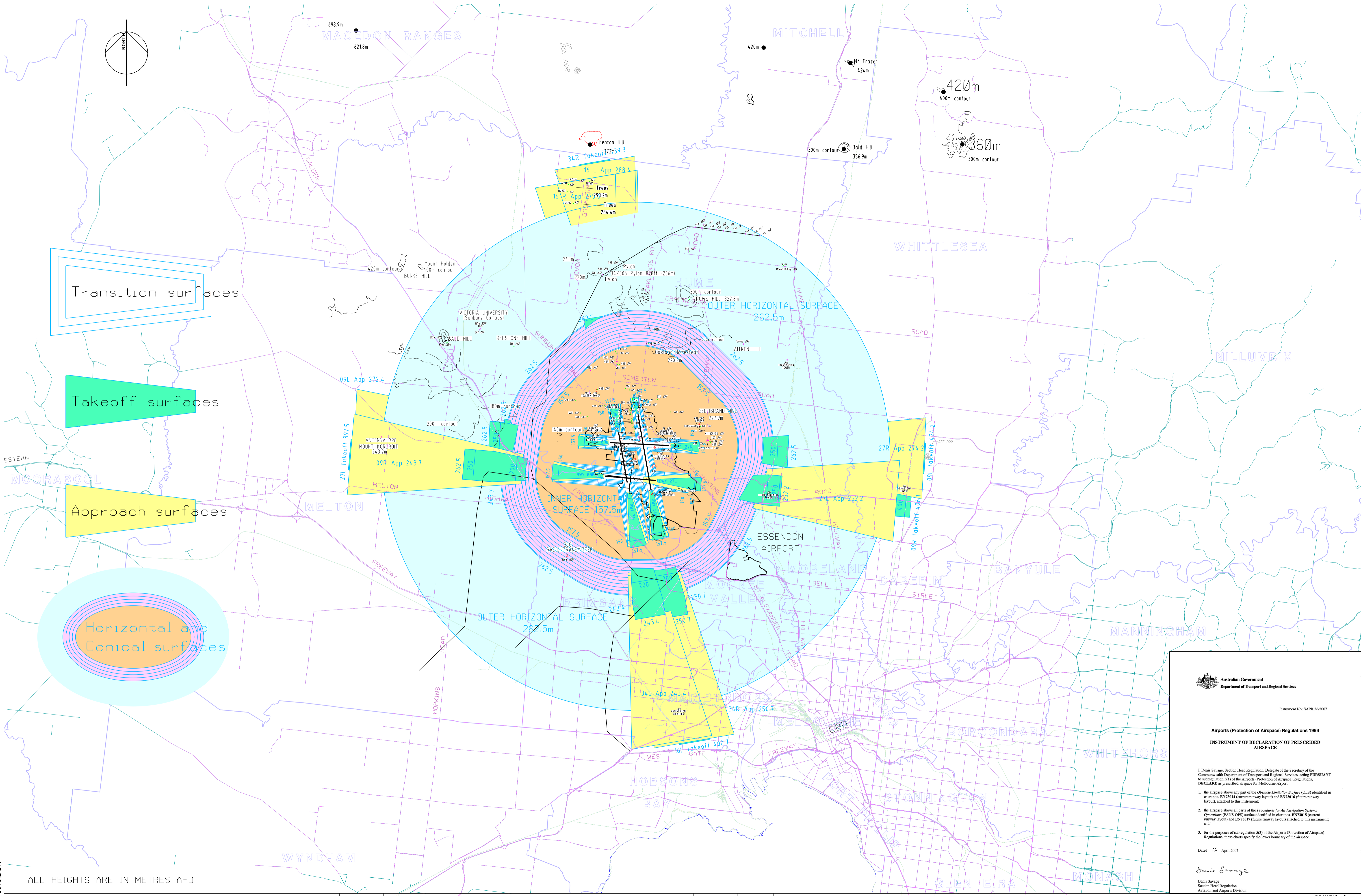
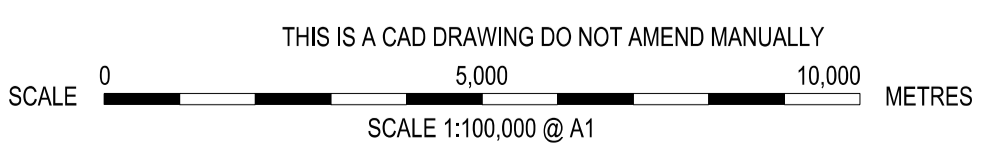


DISCLAIMER: This information is supplied by Australia Pacific Airports (Melbourne) Pty Ltd and is reproduced here for information only. The information shown must be verified for accuracy and compliance by necessary investigation, site inspection and measurement. Melbourne Airport owns the copyright to this drawing and the information contained in it. Reproduction of, or any dealing in, this drawing, or the information it contains, is prohibited.



ALL HEIGHTS ARE IN METRES AHD



DESIGN	DRN	CHKD	AMENDMENTS	EXAMD	APPD	DESIG	DATE	No.	DESIGN	DRN	CHKD	AMENDMENTS	EXAMD	APPD	DESIG	DATE	No.
									CK	CL		CR 4437 - APPROVAL LETTER ADDED		MS	JUN 07	1	
									PD	MS		2005 PRESCRIBED AIRSPACE CHART		MS	FEB 06	0	
									DRN	CHKD							

MELBOURNE AIRPORT  
PRESCRIBED AIRSPACE  
OLS  
FUTURE RUNWAY LAYOUT



DRAWING NO.  
EN  
73016  
REV  
001  
A1

Australian Government  
Department of Transport and Regional Services

Instrument No: SAPR 362007

**Airports (Protection of Airspace) Regulations 1996**  
**INSTRUMENT OF DECLARATION OF PRESCRIBED AIRSPACE**

I, Denis Savage, Section Head Regulation, Delegate of the Secretary of the Commonwealth Department of Transport and Regional Services, acting PURSUANT to subregulation 5(1) of the Airports (Protection of Airspace) Regulations, **DECLARE** as prescribed airspace for Melbourne Airport:

- the airspace above any part of the Obstacle Limitation Surface (OLS) identified in chart no. EN7016 (current runway layout) and EN7016A (future runway layout), attached to this instrument;
- the airspace above all parts of the Procedures for Air Navigation System (PANS-OPS) surface identified in chart no. EN7015 (current runway layout) and EN7015A (future runway layout) attached to this instrument; and
- for the purposes of subregulation 5(3) of the Airports (Protection of Airspace) Regulations, these charts specify the lower boundary of the airspace.

Dated 16 April 2007

Denis Savage  
Section Head Regulation  
Aviation and Airports Division

F:\mel\en\pnt\EN73016.DGN