

DISCLAIMER: This information is supplied by Australia Pacific Airports (Melbourne) Pty Ltd and is reproduced here for information only. The information shown must be verified for accuracy and completeness by necessary investigation, site inspection and measurement. Melbourne Airport owns the copyright to this drawing and the information contained in it. Reproduction of, or any dealing in, this drawing, or the information it contains, is prohibited.



Instrument No: ASB 02/2010

Airports (Protection of Airspace) regulations 1996
INSTRUMENT OF DECLARATION OF PRESCRIBED AIRSPACE

I, Dilip Mathew, Section Head of Aerodrome Precincts, Delegate of the Secretary of the Commonwealth Department of Infrastructure and Transport, acting PURSUANT to subregulation 5(1) of the Airports (Protection of Airspace) Regulations, DECLARE as prescribed airspace for Melbourne Airport:

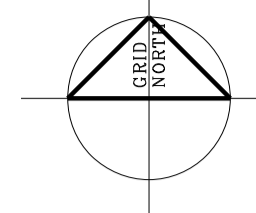
- the airspace above any part of the Procedure for Air Navigation System Operations (PANS-CPS) surface identified in charts numbers EN73030, EN73031, EN73032, EN73033 and EN73034, attached to this instrument; and
- for the purposes of subregulation 5(3) of the Airports (Protection of Airspace) Regulations, these charts specify the lower boundary of the airspace.

Dated 23 December 2010

[Signature]

Dilip Mathew
 Section Head
 Aerodrome Products
 Aviation Environment Branch
 Aviation and Airports Divisions

GPO Box 994 Canberra ACT 2601 Australia • Telephone: 02 6274 7111 • Facsimile: 02 6257 2588
 Website: www.infrastructure.gov.au • ARN: 86 267 354 917



25 NAUTICAL MILES

MAP LEGEND

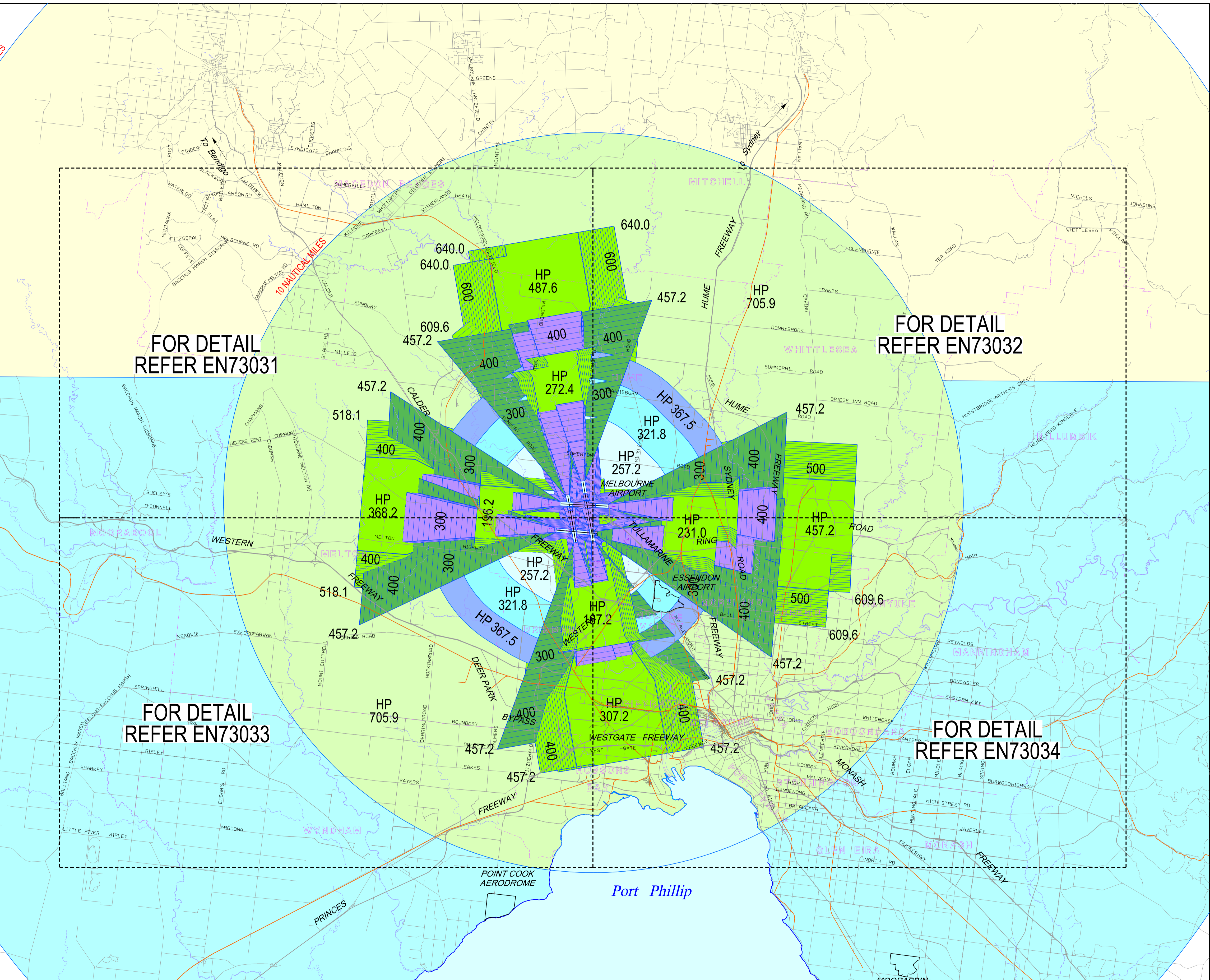
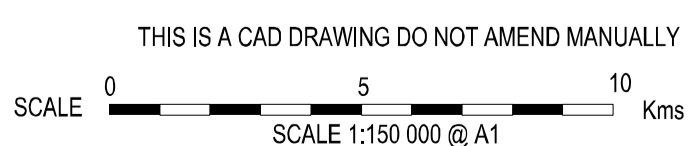
- RAIL
- WATERWAY
- ROAD

LEGEND - PANS-OPS PROTECTION SURFACES

- 25 NM MINIMUM SAFE ALTITUDE - NORTHERN SEGMENT
- 25 NM MINIMUM SAFE ALTITUDE - SOUTHERN SEGMENT
- 10 NM MINIMUM SAFE ALTITUDE
- AERODROME CIRCLING - CATEGORY A & B
- AERODROME CIRCLING - CATEGORY C
- AERODROME CIRCLING - CATEGORY D
- GNSS LANDING SYSTEM (GLS)
- RNAV (GNSS) APPROACHES & MISSED APPROACHES
- STANDARD INSTRUMENT DEPARTURES (SID)

THE DEPICTED FUTURE PROTECTION SURFACES ARE MODELLED ON THE BASIS OF ENVISAGED SATELLITE NAVIGATION INSTRUMENT FLIGHT PROCEDURES ONLY.

IT IS ANTICIPATED CONVENTIONAL GROUND BASED NAVIGATIONAL AID PROCEDURES WILL BE PHASED OUT AS SATELLITE NAVIGATION PROCEDURES CONTINUE TO BE IMPLEMENTED.



DESIGN	DRN	CHKD	AMENDMENTS	EXAMD	APPD	DESIG	DATE	No.	DESIGN	DRN	CHKD	AMENDMENTS	EXAMD	APPD	DESIG	DATE	No.
							21/07/2010	0									

MELBOURNE AIRPORT
 PRESCRIBED AIRSPACE
 PANS OPS
 ULTIMATE RUNWAY LAYOUT
 KEY PLAN



DRAWING NO.
 EN 73030
 REV 0 A1

18/02/2013

4:45:08 PM

\\Airport.local\mel\Cadd\melen\pn\EN73030_0-1.dgn