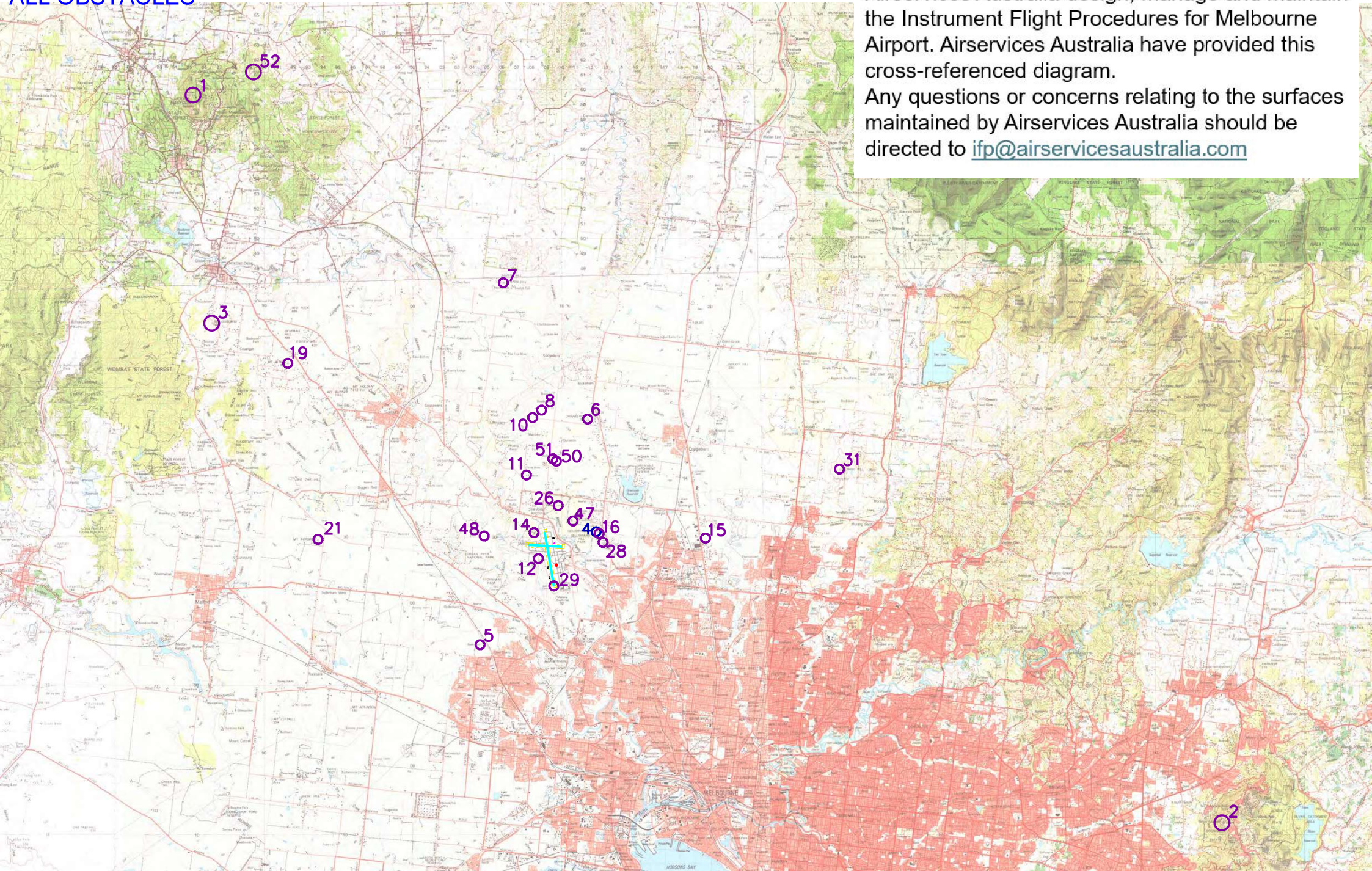


YMML - MELBOURNE AERODROME ALL OBSTACLES

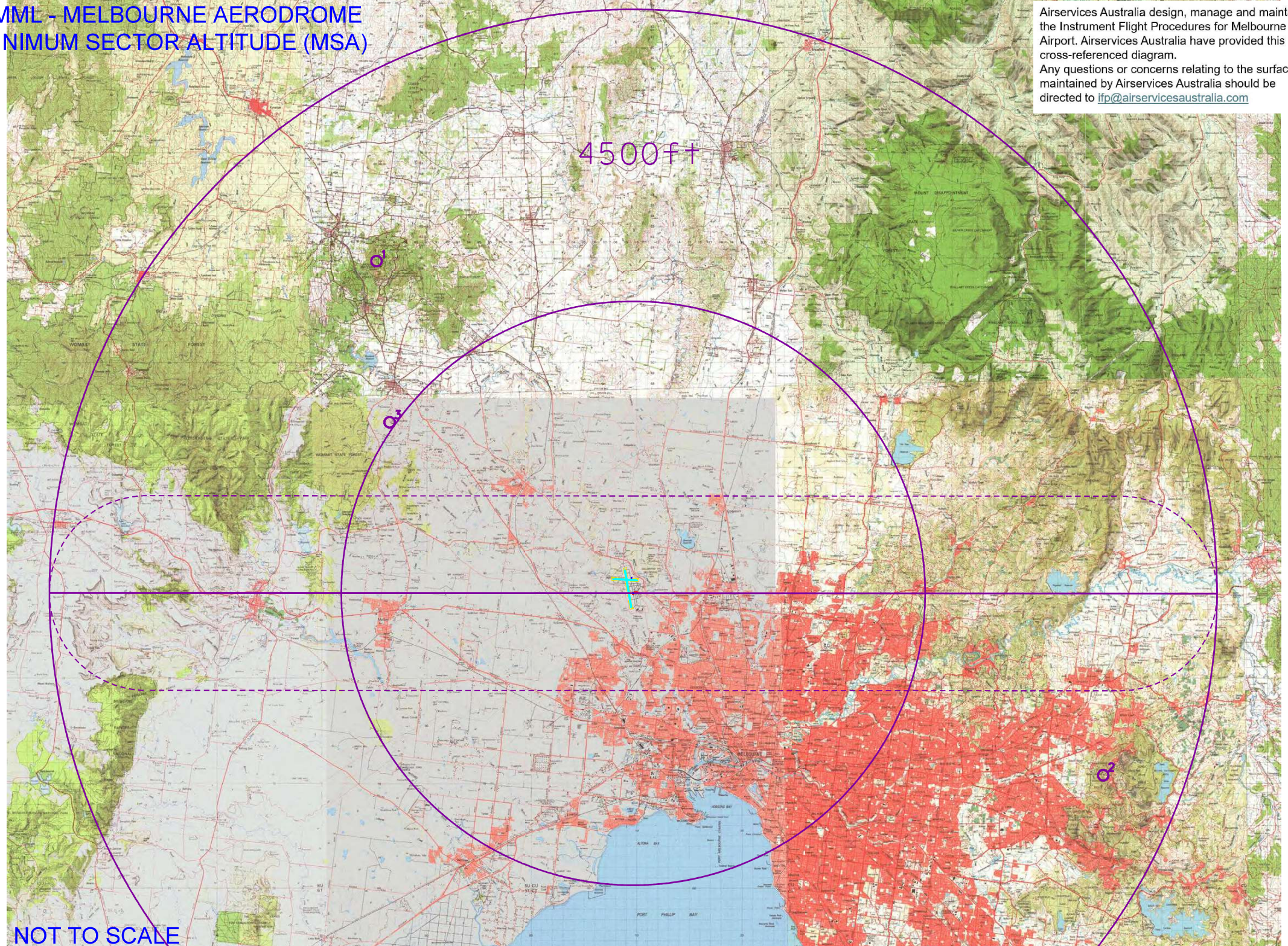
Airservices Australia design, manage and maintain the Instrument Flight Procedures for Melbourne Airport. Airservices Australia have provided this cross-referenced diagram. Any questions or concerns relating to the surfaces maintained by Airservices Australia should be directed to ifp@airservicesaustralia.com



NOT TO SCALE

YMML - MELBOURNE AERODROME MINIMUM SECTOR ALTITUDE (MSA)

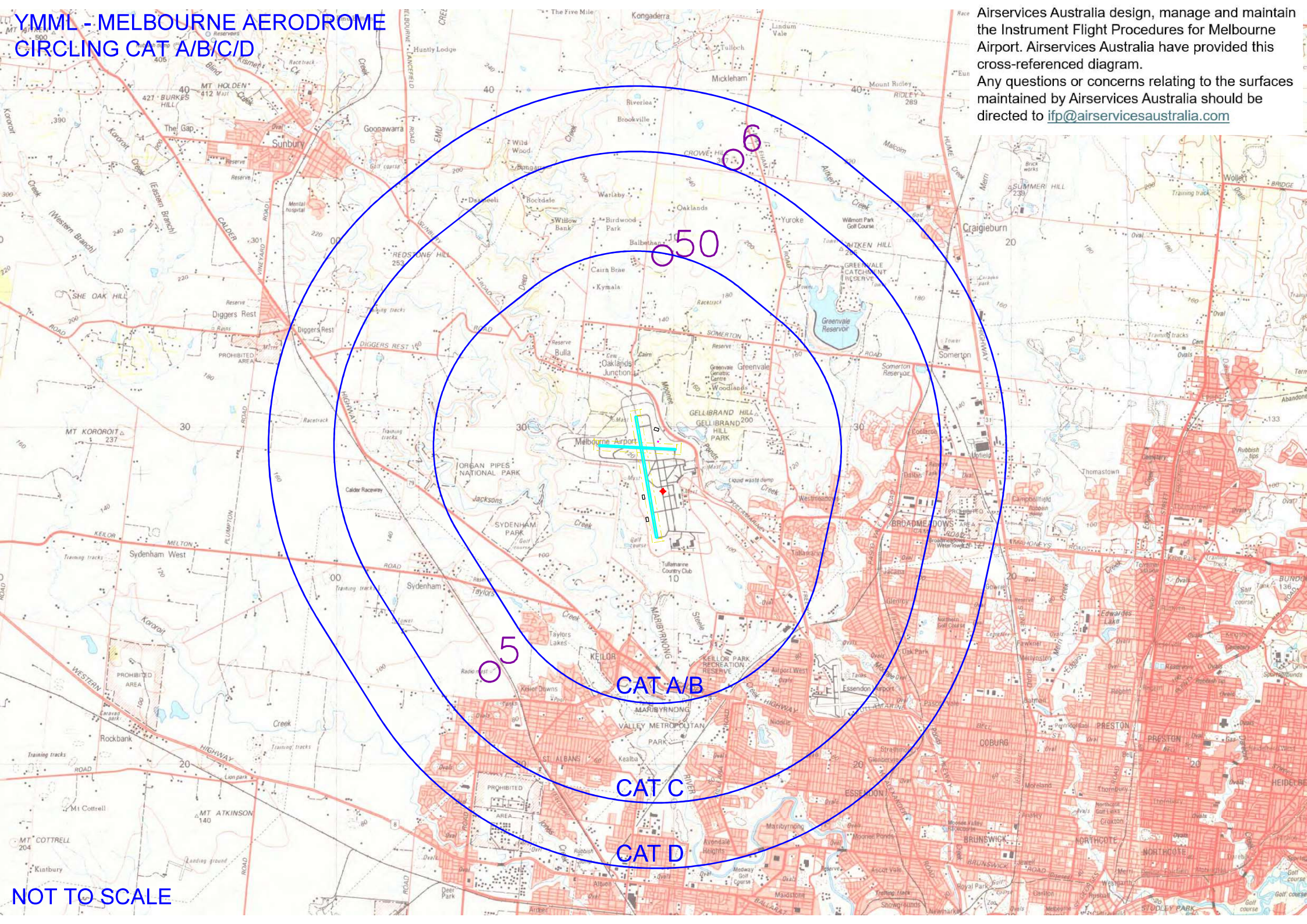
Airservices Australia design, manage and maintain the Instrument Flight Procedures for Melbourne Airport. Airservices Australia have provided this cross-referenced diagram. Any questions or concerns relating to the surfaces maintained by Airservices Australia should be directed to ifp@airservicesaustralia.com



NOT TO SCALE

YMML - MELBOURNE AERODROME CIRCLING CAT A/B/C/D

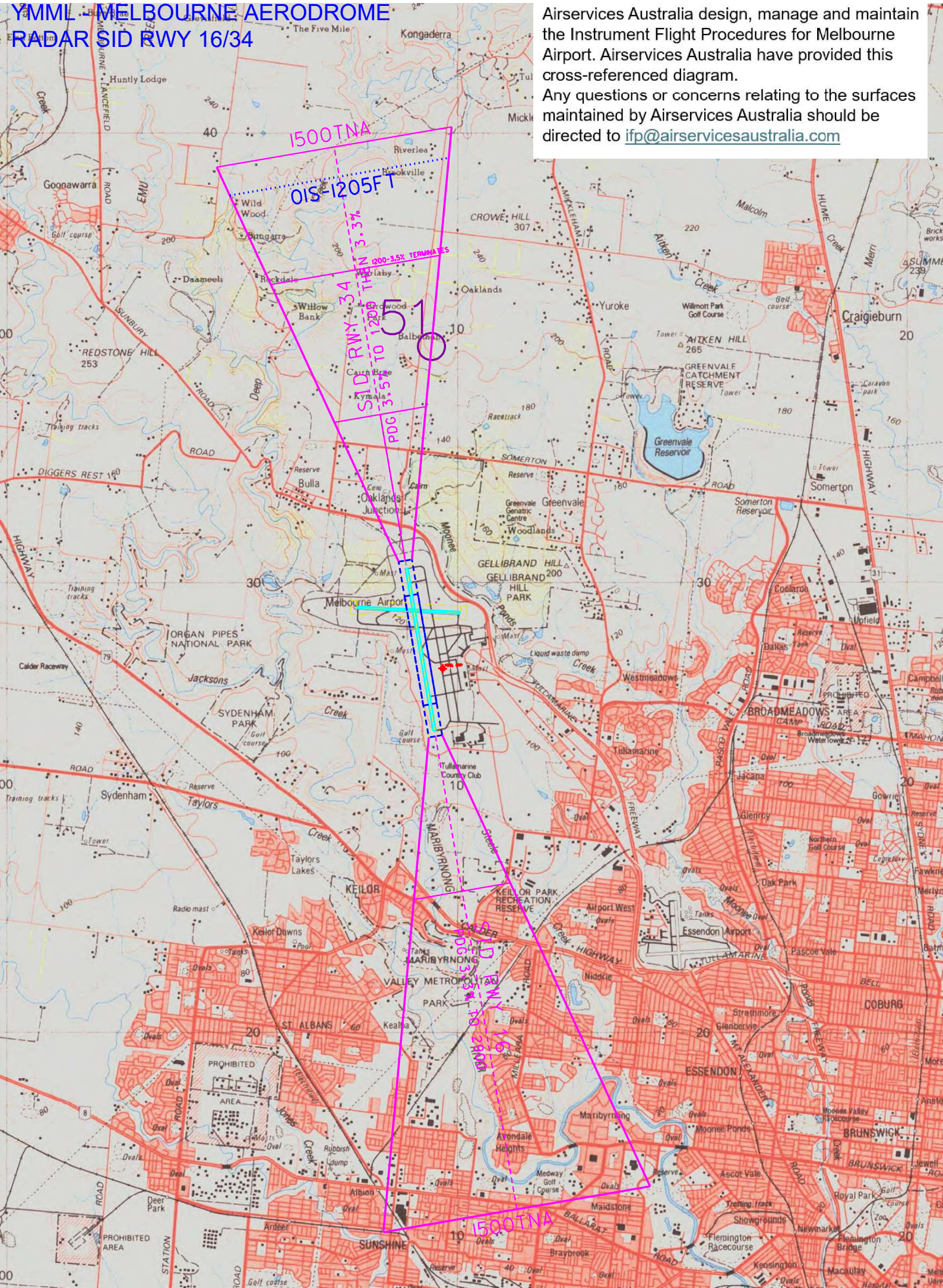
Airservices Australia design, manage and maintain the Instrument Flight Procedures for Melbourne Airport. Airservices Australia have provided this cross-referenced diagram. Any questions or concerns relating to the surfaces maintained by Airservices Australia should be directed to ifp@airservicesaustralia.com



NOT TO SCALE

YMMML MELBOURNE AERODROME RADAR SID RWY 16/34

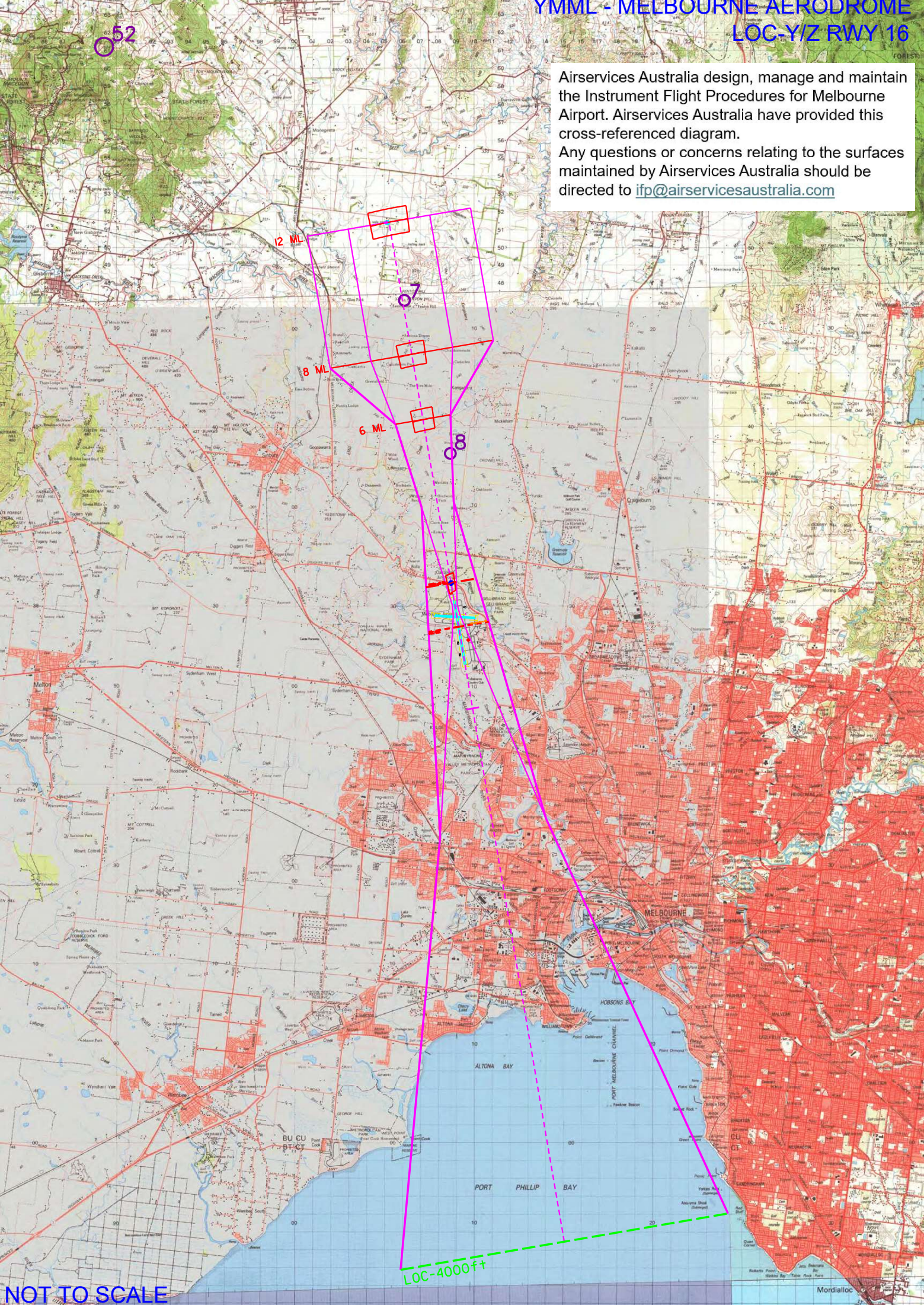
Airservices Australia design, manage and maintain the Instrument Flight Procedures for Melbourne Airport. Airservices Australia have provided this cross-referenced diagram. Any questions or concerns relating to the surfaces maintained by Airservices Australia should be directed to ifp@airservicesaustralia.com



NOT TO SCALE

YMML - MELBOURNE AERODROME LOC-Y/Z RWY 16

Airservices Australia design, manage and maintain the Instrument Flight Procedures for Melbourne Airport. Airservices Australia have provided this cross-referenced diagram. Any questions or concerns relating to the surfaces maintained by Airservices Australia should be directed to ifp@airservicesaustralia.com

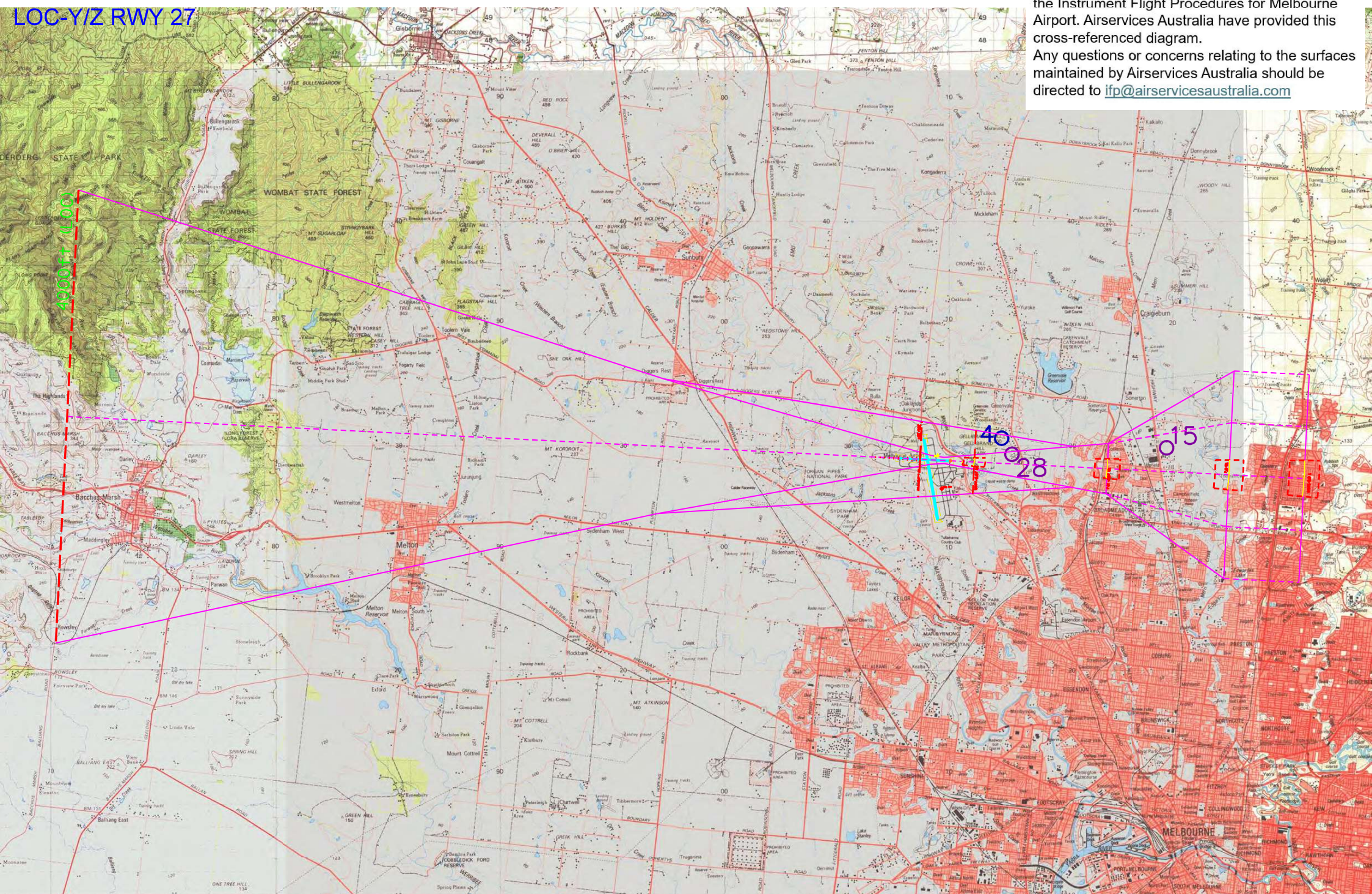


NOT TO SCALE

Mordialloc

YMML - MELBOURNE AERODROME LOC-Y/Z RWY 27

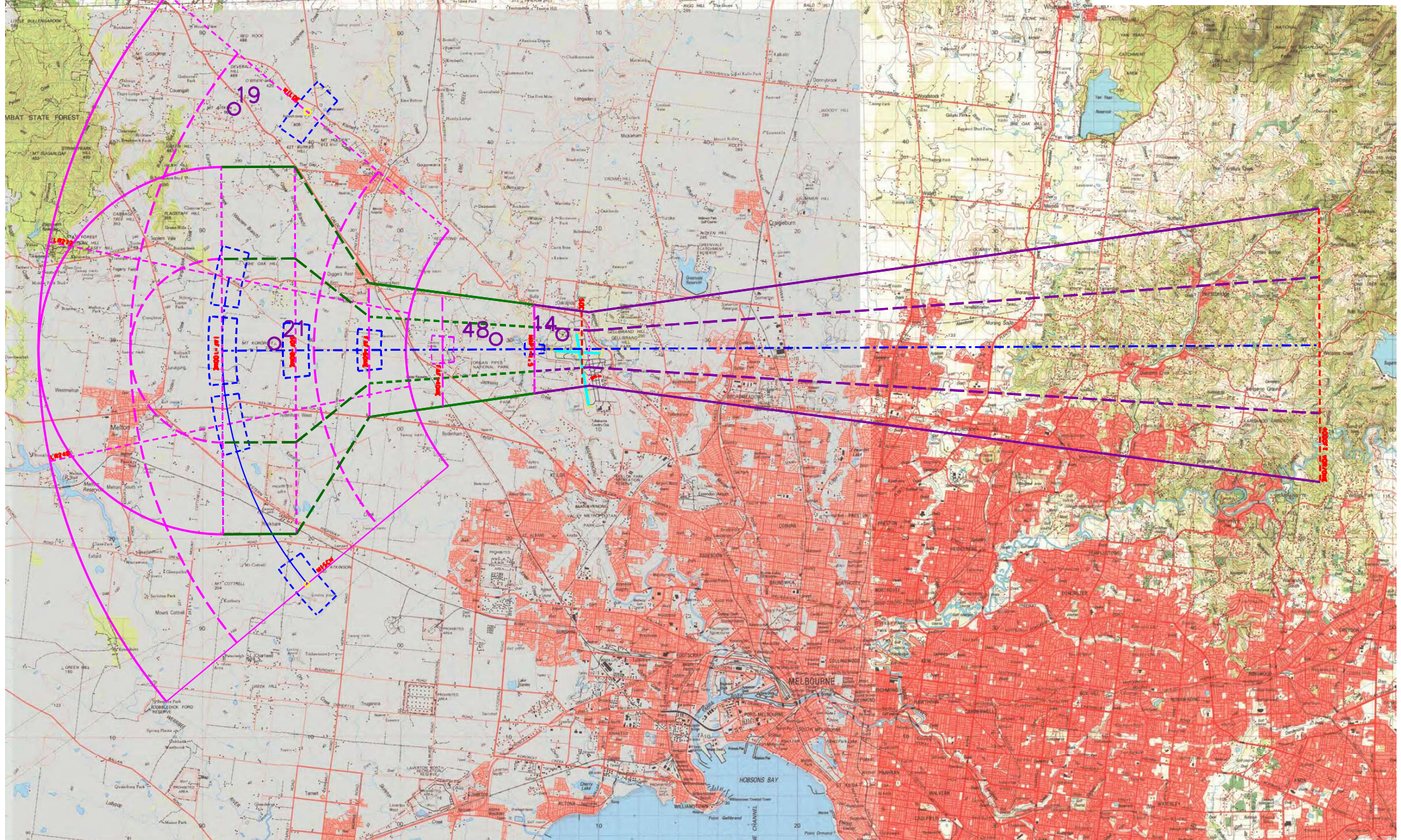
Airservices Australia design, manage and maintain the Instrument Flight Procedures for Melbourne Airport. Airservices Australia have provided this cross-referenced diagram. Any questions or concerns relating to the surfaces maintained by Airservices Australia should be directed to ifp@airservicesaustralia.com



NOT TO SCALE

YMML - MELBOURNE AERODROME VOR RWY 09

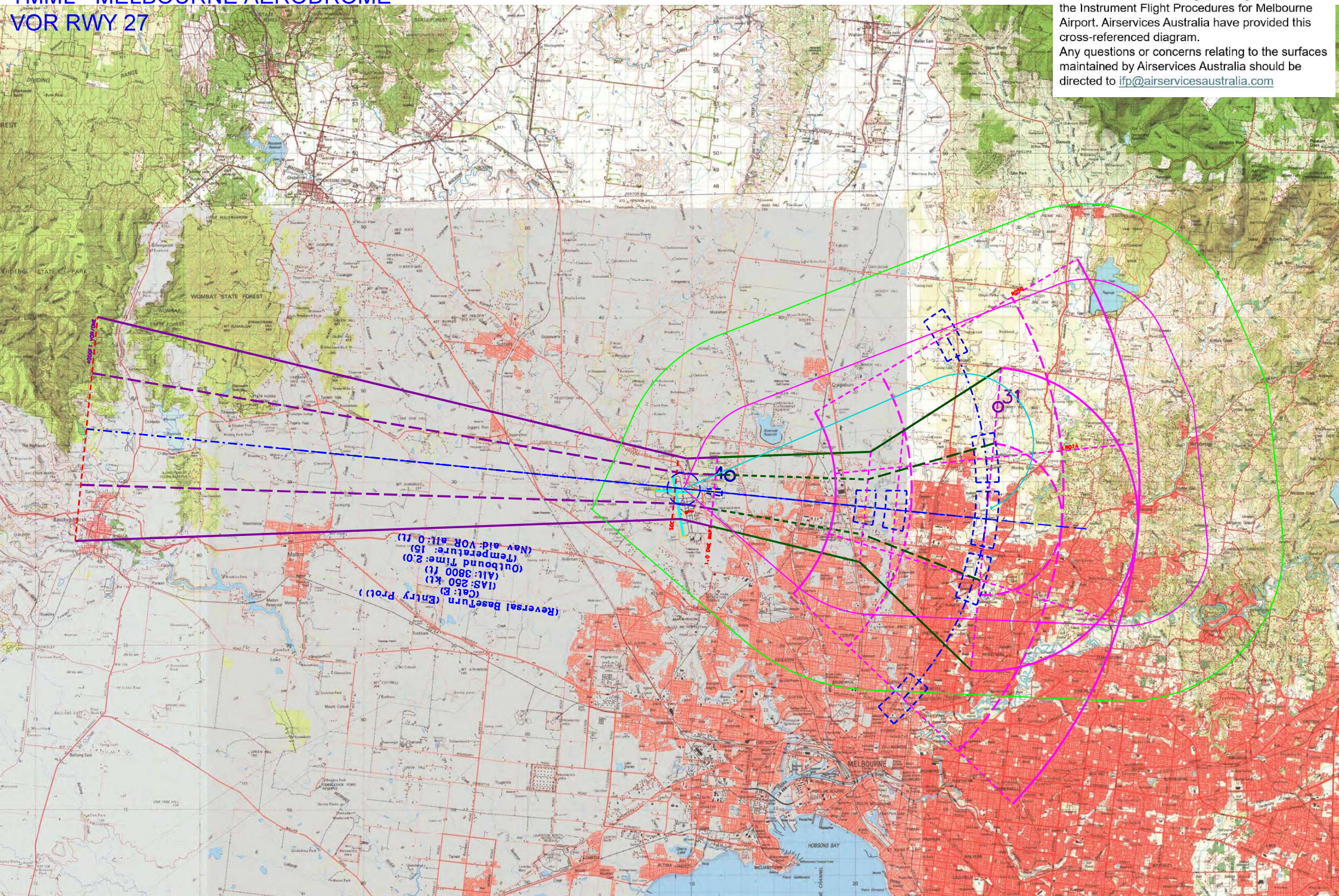
Airservices Australia design, manage and maintain the Instrument Flight Procedures for Melbourne Airport. Airservices Australia have provided this cross-referenced diagram. Any questions or concerns relating to the surfaces maintained by Airservices Australia should be directed to ifp@airservicesaustralia.com



NOT TO SCALE

YMML - MELBOURNE AERODROME VOR RWY 27

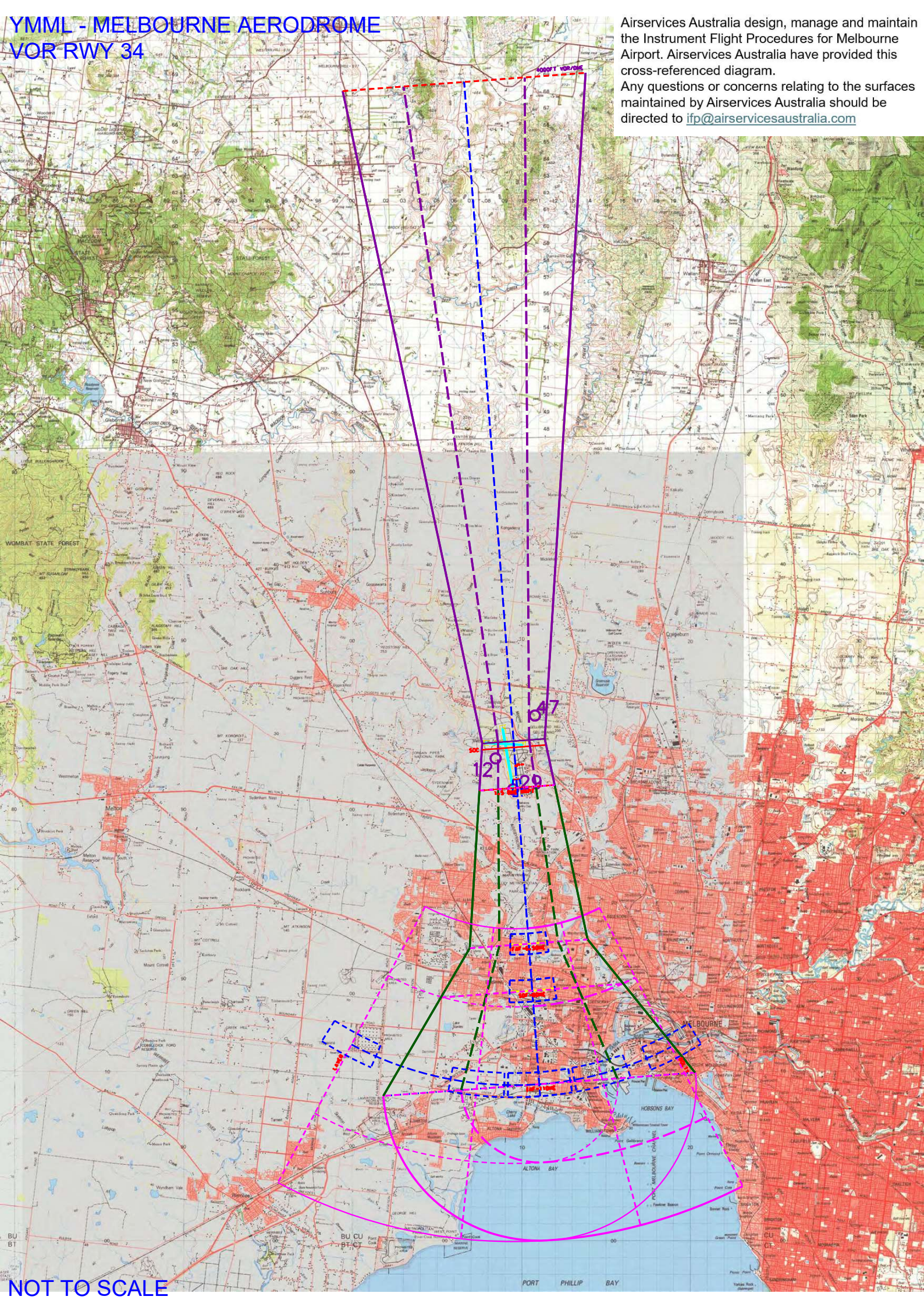
Airservices Australia design, manage and maintain the Instrument Flight Procedures for Melbourne Airport. Airservices Australia have provided this cross-referenced diagram. Any questions or concerns relating to the surfaces maintained by Airservices Australia should be directed to ifp@airservicesaustralia.com



NOT TO SCALE

YMML - MELBOURNE AERODROME VOR RWY 34

Airservices Australia design, manage and maintain the Instrument Flight Procedures for Melbourne Airport. Airservices Australia have provided this cross-referenced diagram. Any questions or concerns relating to the surfaces maintained by Airservices Australia should be directed to ifp@airservicesaustralia.com

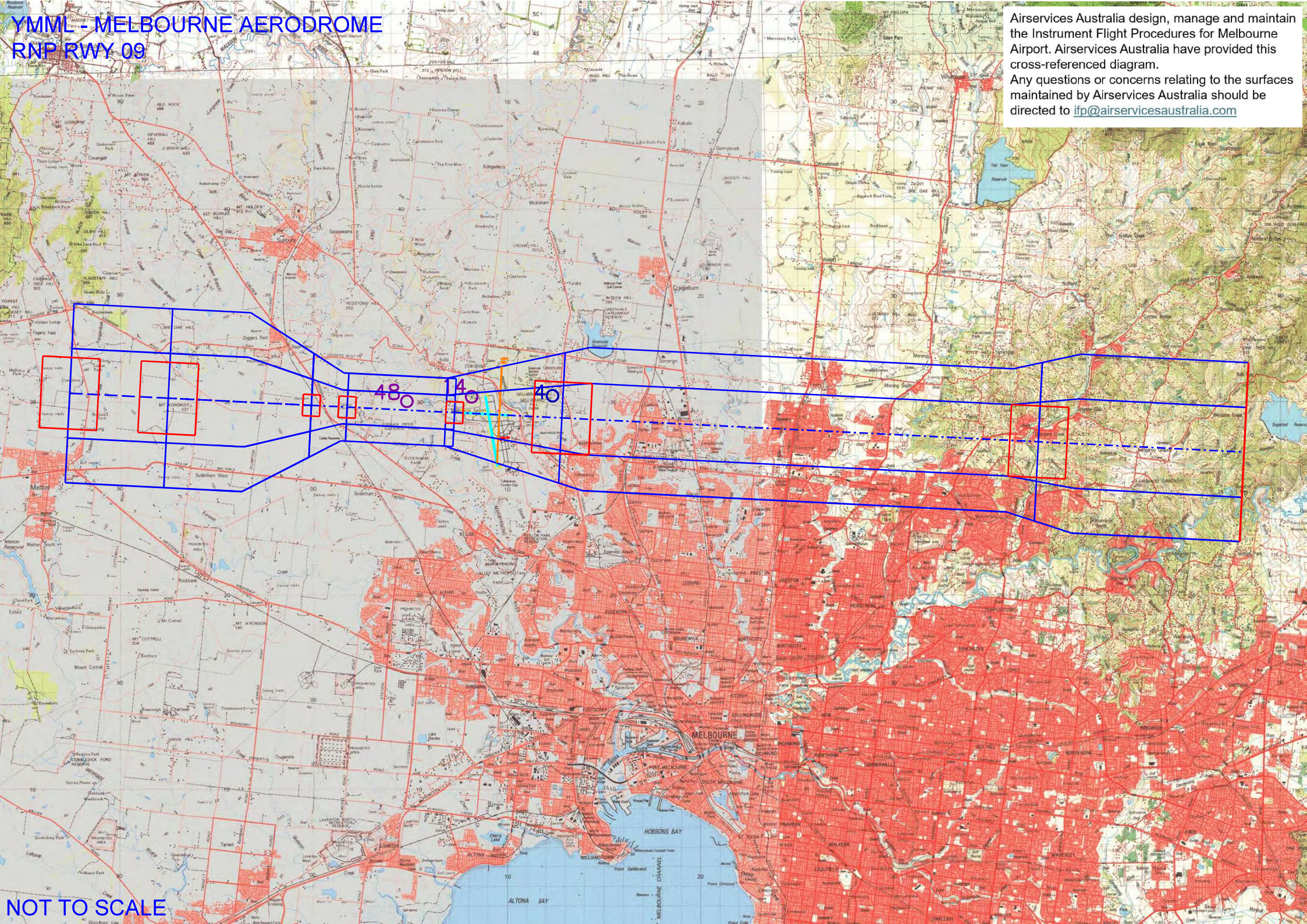


NOT TO SCALE

PORT PHILLIP BAY

YMML MELBOURNE AERODROME RNP RWY 09

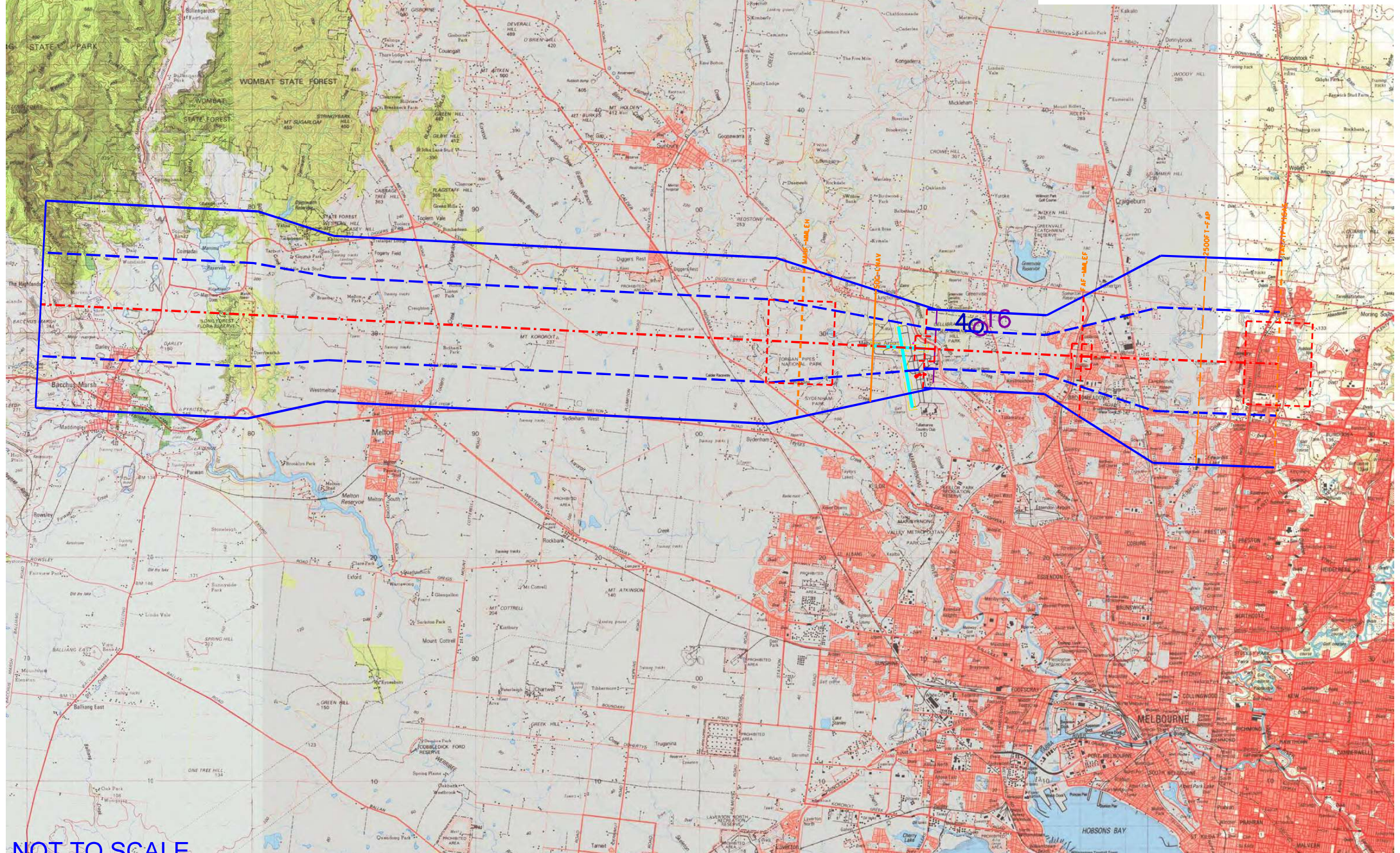
Airservices Australia design, manage and maintain the Instrument Flight Procedures for Melbourne Airport. Airservices Australia have provided this cross-referenced diagram. Any questions or concerns relating to the surfaces maintained by Airservices Australia should be directed to ifp@airservicesaustralia.com



NOT TO SCALE

YMML - MELBOURNE AERODROME RNP RWY 27

Airservices Australia design, manage and maintain the Instrument Flight Procedures for Melbourne Airport. Airservices Australia have provided this cross-referenced diagram. Any questions or concerns relating to the surfaces maintained by Airservices Australia should be directed to ifp@airservicesaustralia.com



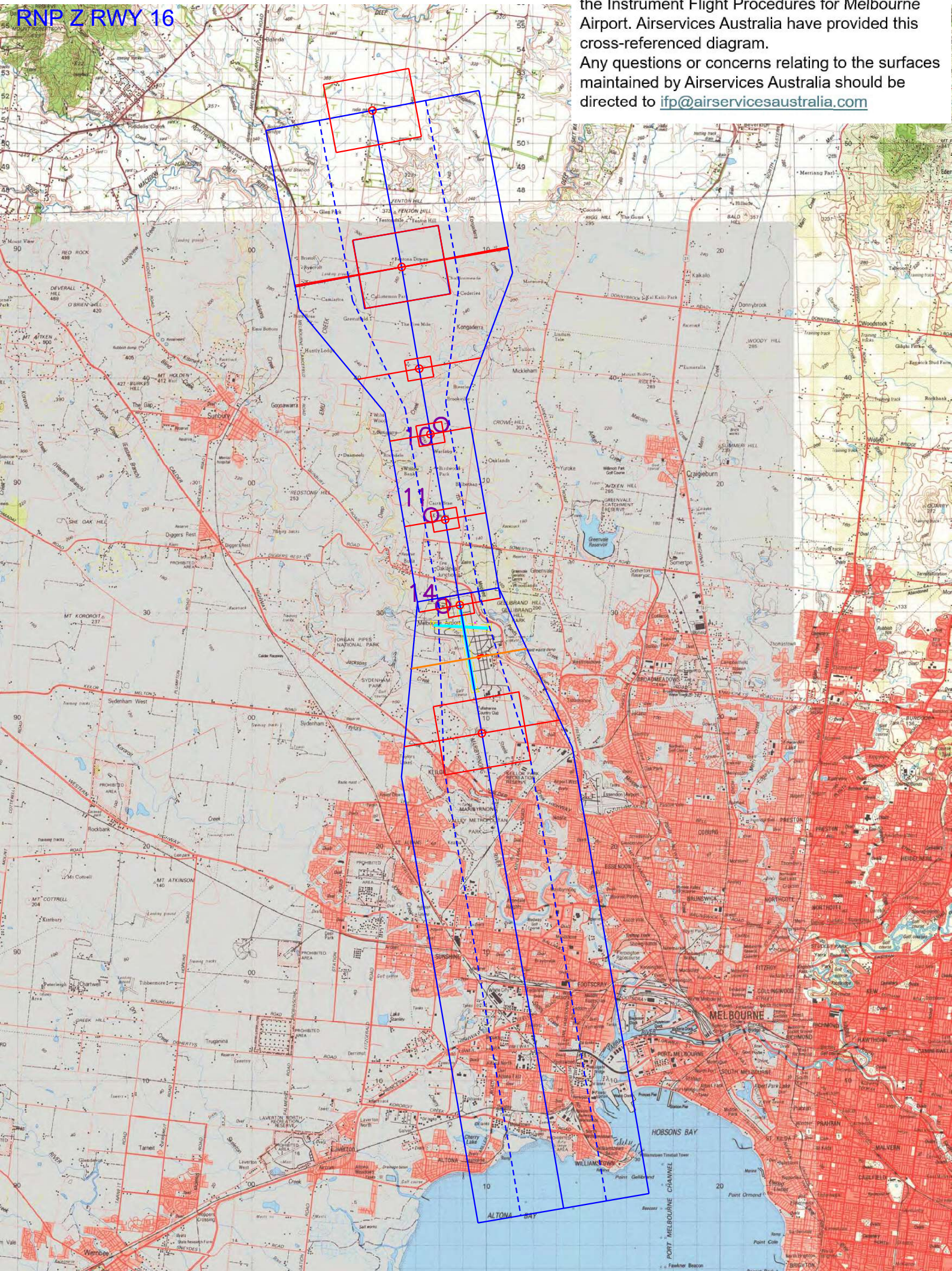
NOT TO SCALE

YMML - MELBOURNE AERODROME

RNP Z RWY 16

Airservices Australia design, manage and maintain the Instrument Flight Procedures for Melbourne Airport. Airservices Australia have provided this cross-referenced diagram.

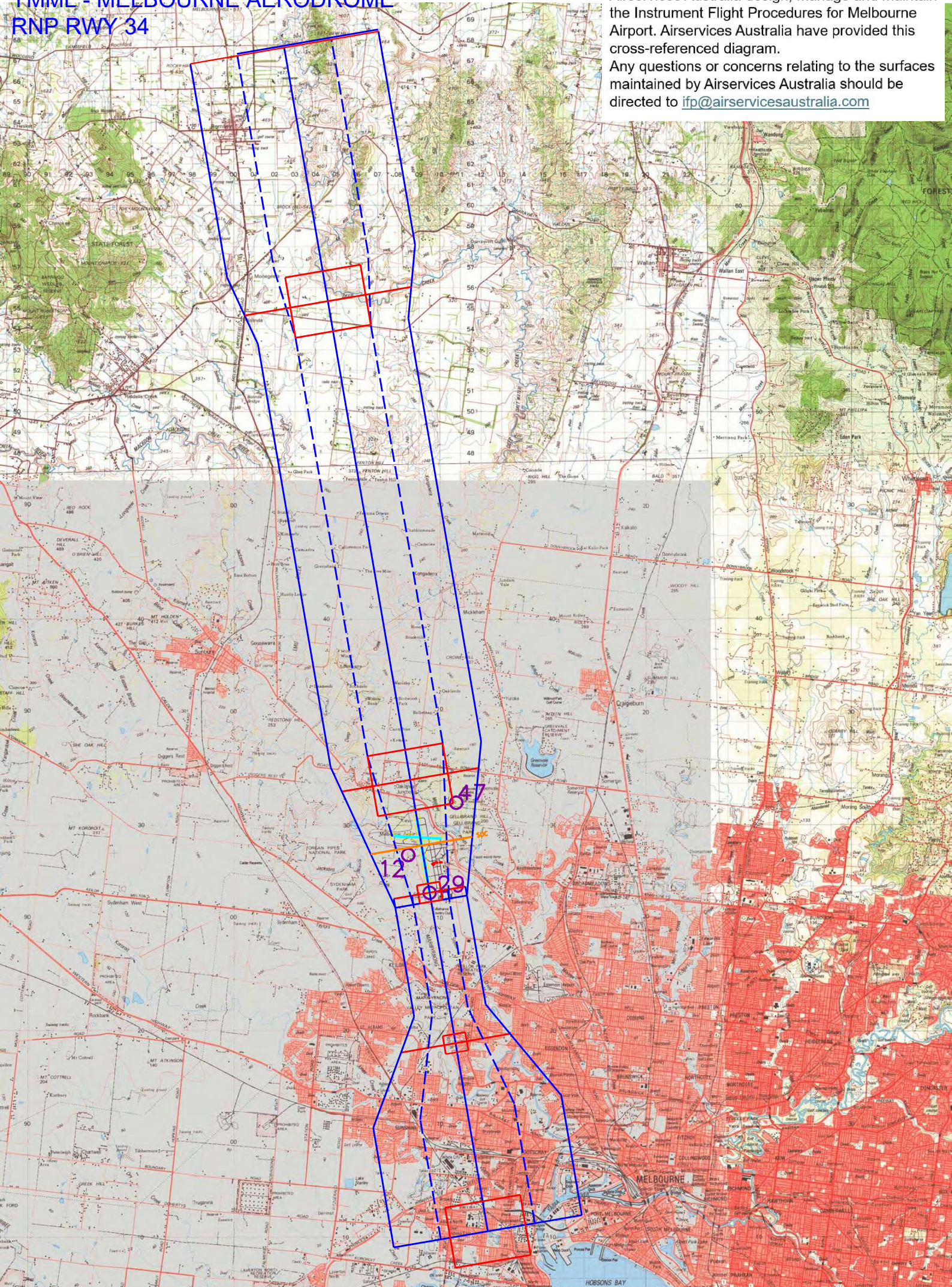
Any questions or concerns relating to the surfaces maintained by Airservices Australia should be directed to ifp@airservicesaustralia.com



NOT TO SCALE

YMML - MELBOURNE AERODROME RNP RWY 34

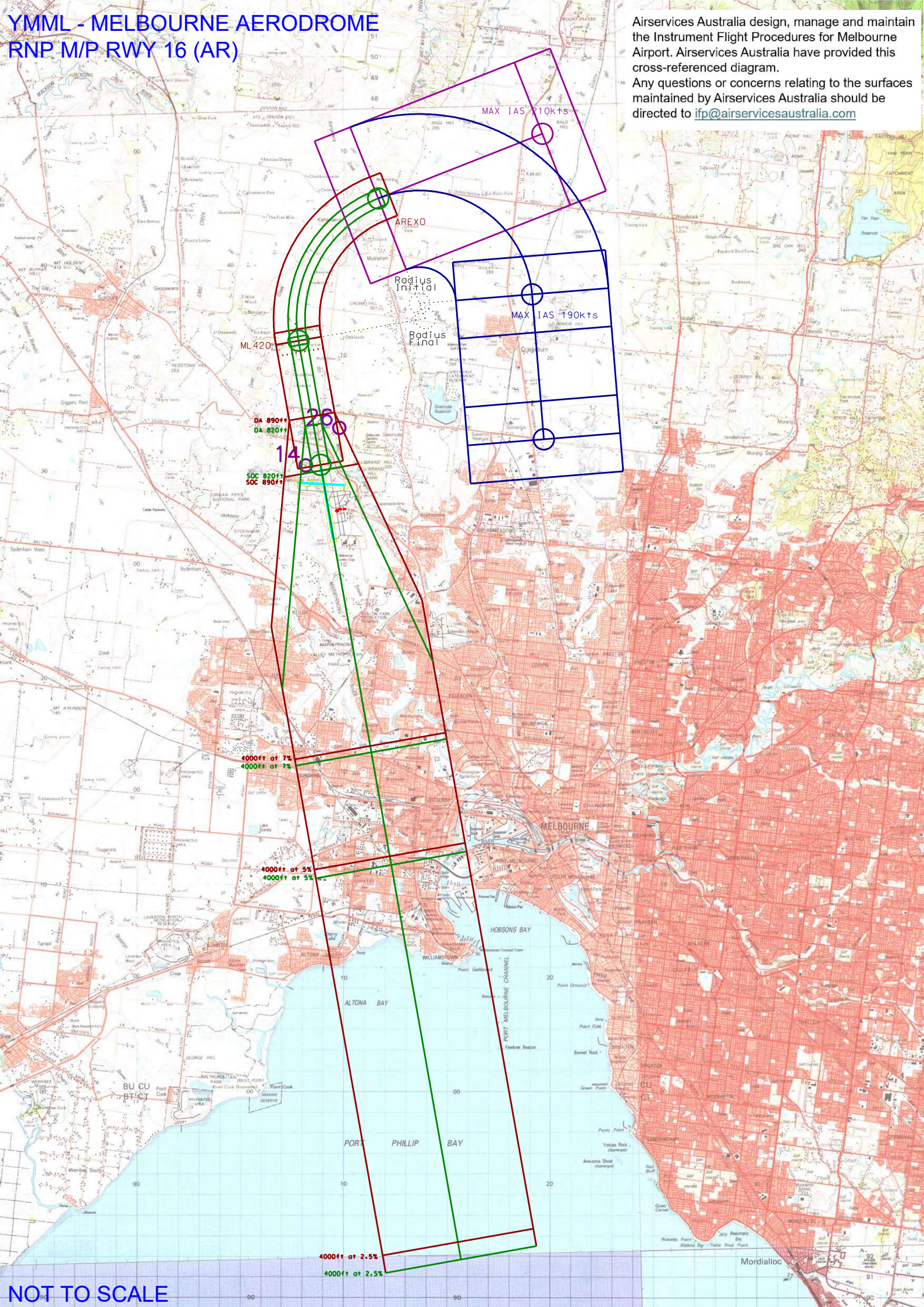
Airservices Australia design, manage and maintain the Instrument Flight Procedures for Melbourne Airport. Airservices Australia have provided this cross-referenced diagram. Any questions or concerns relating to the surfaces maintained by Airservices Australia should be directed to ifp@airservicesaustralia.com



NOT TO SCALE

YMML - MELBOURNE AERODROME RNP M/P RWY 16 (AR)

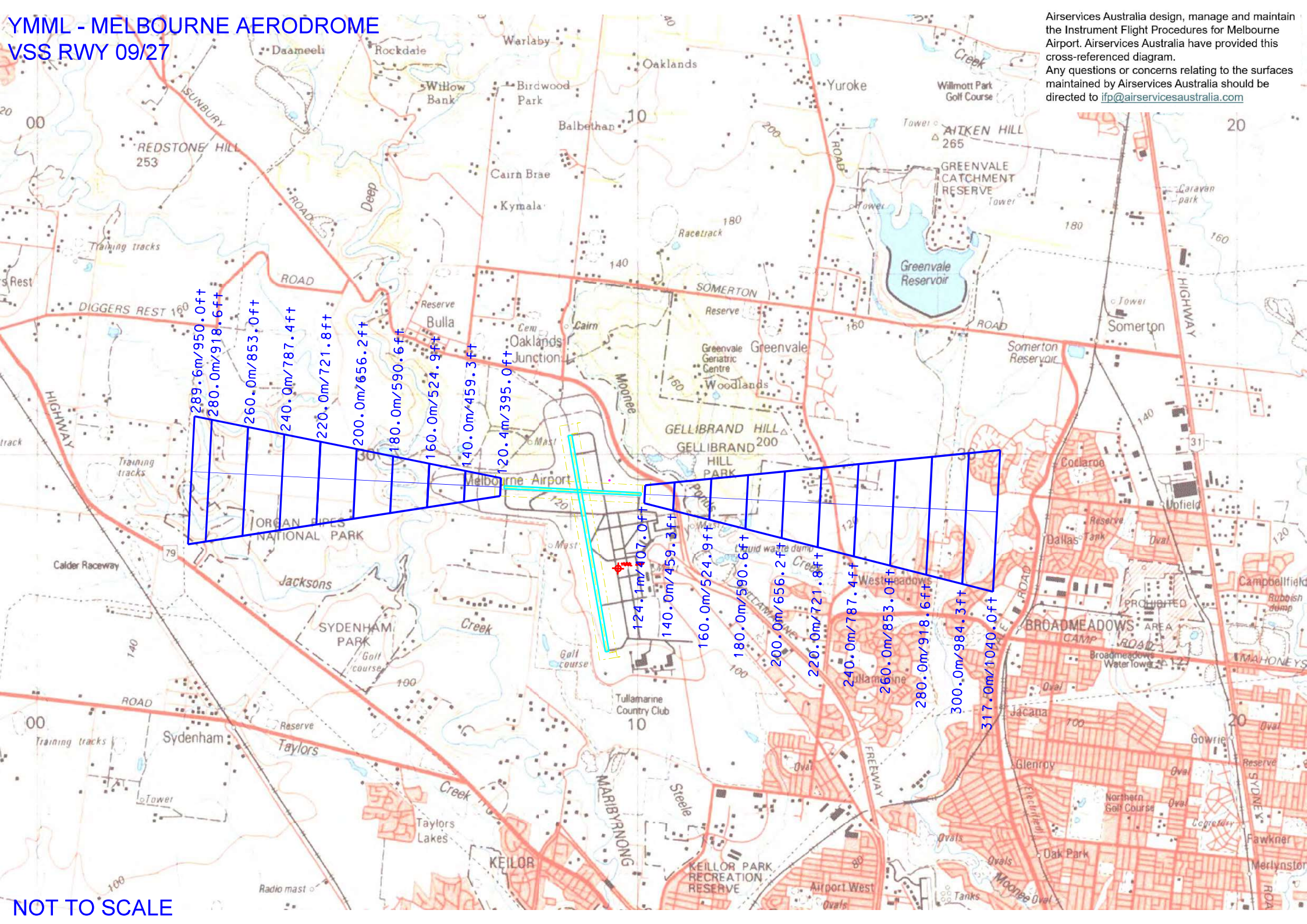
Airservices Australia design, manage and maintain the Instrument Flight Procedures for Melbourne Airport. Airservices Australia have provided this cross-referenced diagram. Any questions or concerns relating to the surfaces maintained by Airservices Australia should be directed to ifp@airservicesaustralia.com



NOT TO SCALE

YMML - MELBOURNE AERODROME VSS RWY 09/27

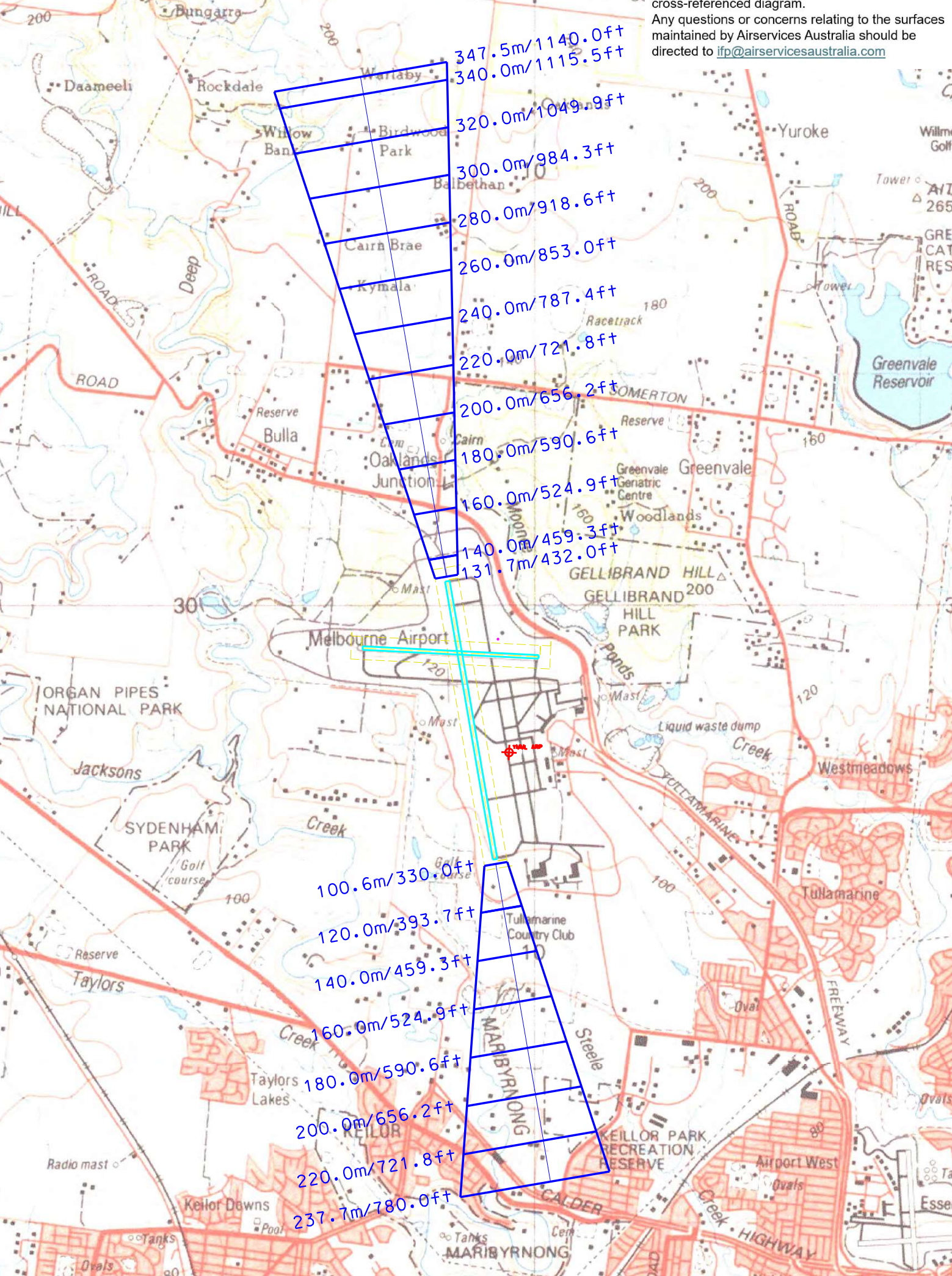
Airservices Australia design, manage and maintain the Instrument Flight Procedures for Melbourne Airport. Airservices Australia have provided this cross-referenced diagram. Any questions or concerns relating to the surfaces maintained by Airservices Australia should be directed to ifp@airservicesaustralia.com



NOT TO SCALE

YMML - MELBOURNE AERODROME VSS RWY 16/34

Airservices Australia design, manage and maintain the Instrument Flight Procedures for Melbourne Airport. Airservices Australia have provided this cross-referenced diagram. Any questions or concerns relating to the surfaces maintained by Airservices Australia should be directed to ifp@airservicesaustralia.com



NOT TO SCALE