



Melbourne Airport Terminal Waste Retailer Training

MELBOURNE AIRPORT

Overview

01

Understanding Waste Contaminations

02

Common Contaminants

03

Effects Poor Waste Management

04

Best Practices for Prevention @ Melbourne Airport

05

What can you do to help?

06

Q&A

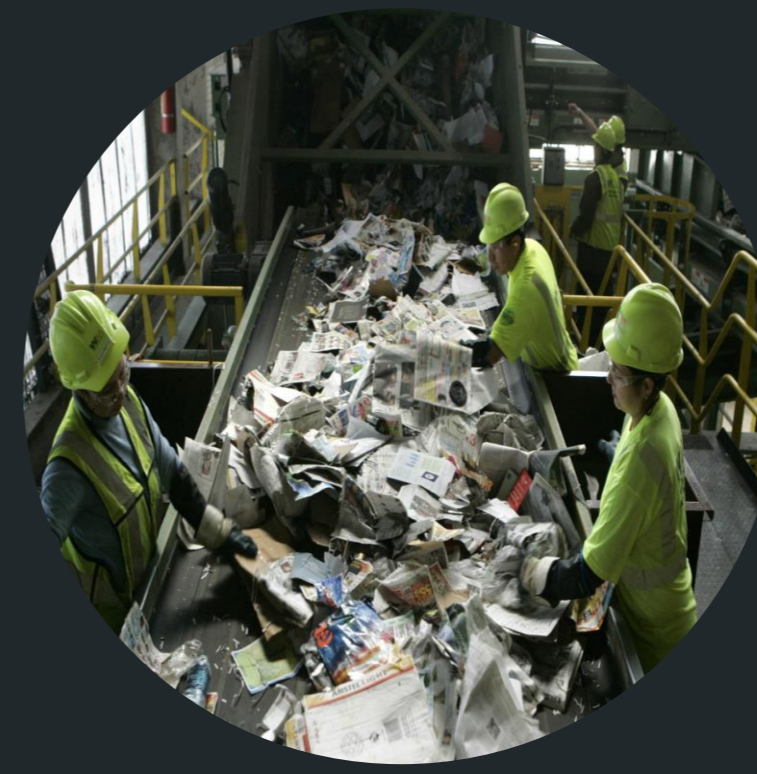
.... why does contamination prevention matters



When contaminations of a load of recycling becomes too great, the whole loads are sent to landfill.



Downstream operations breaks down recycling machines.



Cause harm to recycling workers who are sorting the waste as they're exposed to hazardous waste, diseases and/or other physical damage.



Devaluation of recyclable goods, damaging recycling program and increase cost of services

Common Waste Contaminants

Non-recyclable Plastics



Food + Liquid



Electronics



Hazardous Waste



Disposable Food Packaging



Broken Glass



Textiles



Used tissues and Napkins



Cords, lights, hoses



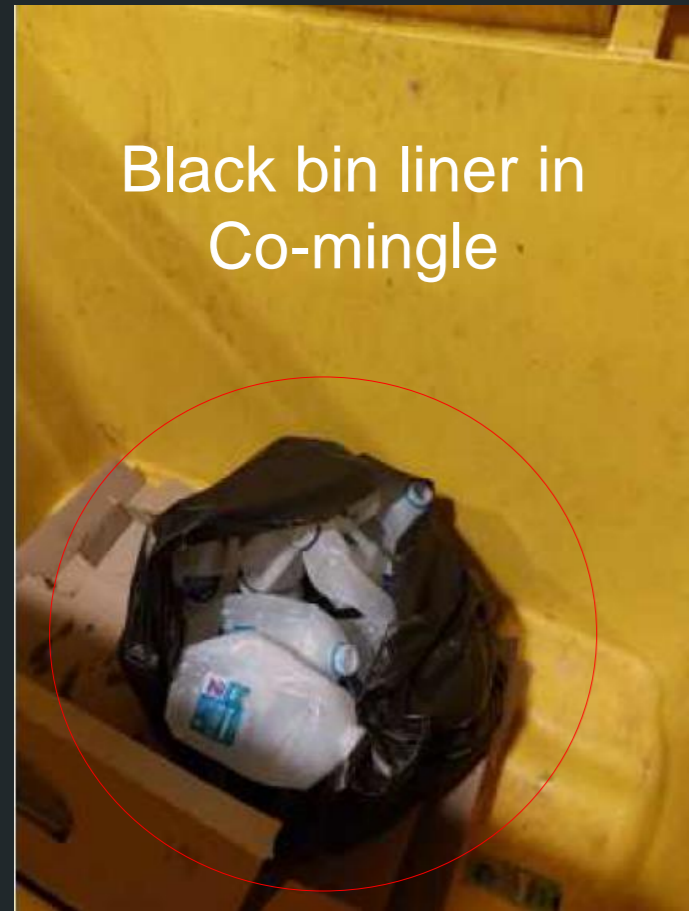
Polystyrene Foam



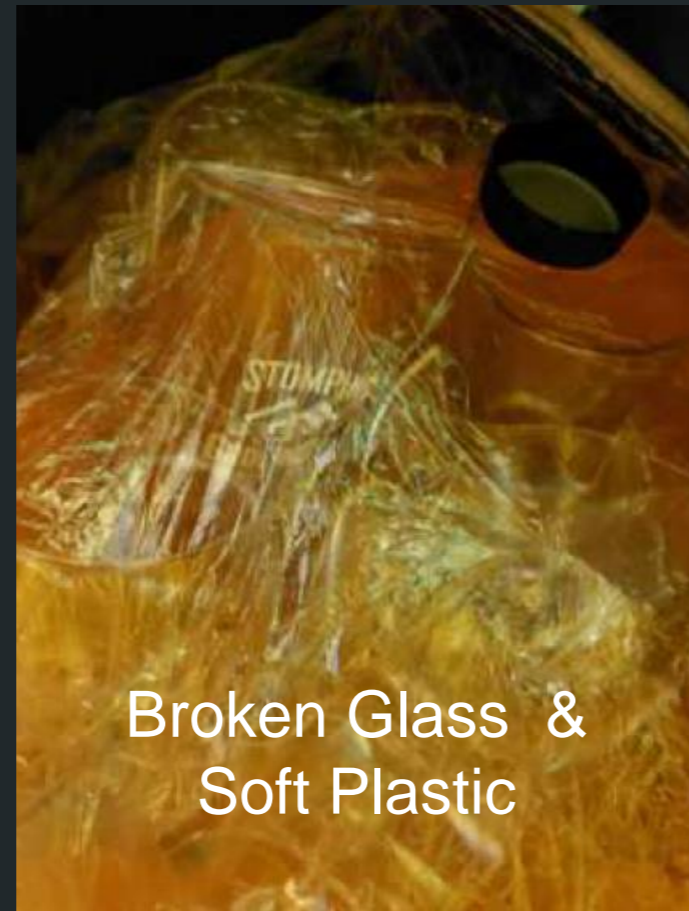
“Wishcycling” is the disposal of consumer waste in a cycle bin in hopes of it being recycled....
Whereas it cannot or unlikely to be recycled

Anything can be waste contaminants if it's not put in the right waste bins...

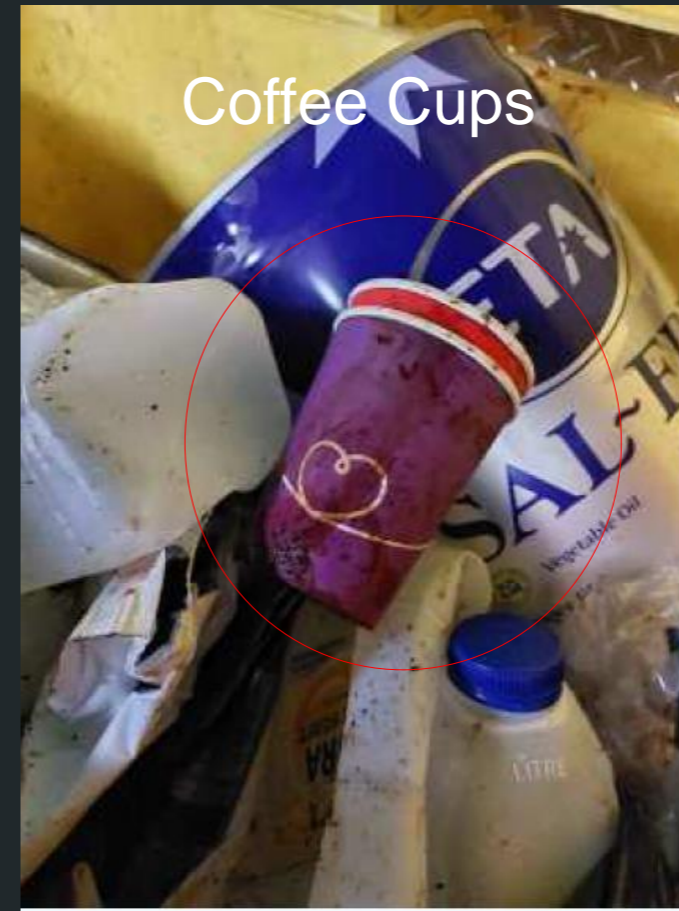
Examples of contaminations



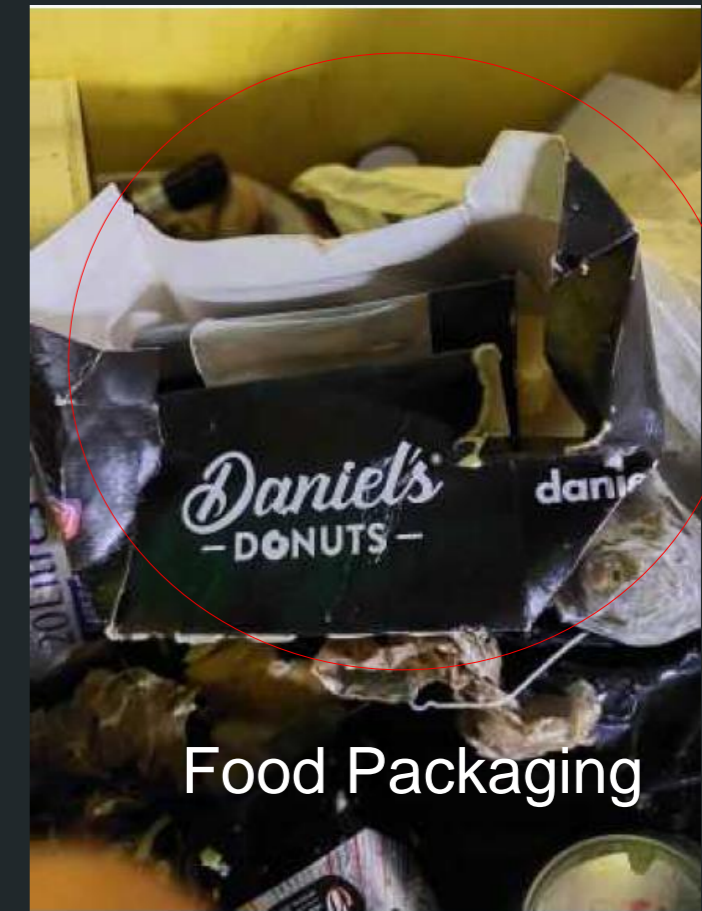
Black bin liner in Co-mingle



Broken Glass & Soft Plastic



Coffee Cups



Food Packaging



Hard Rubbish

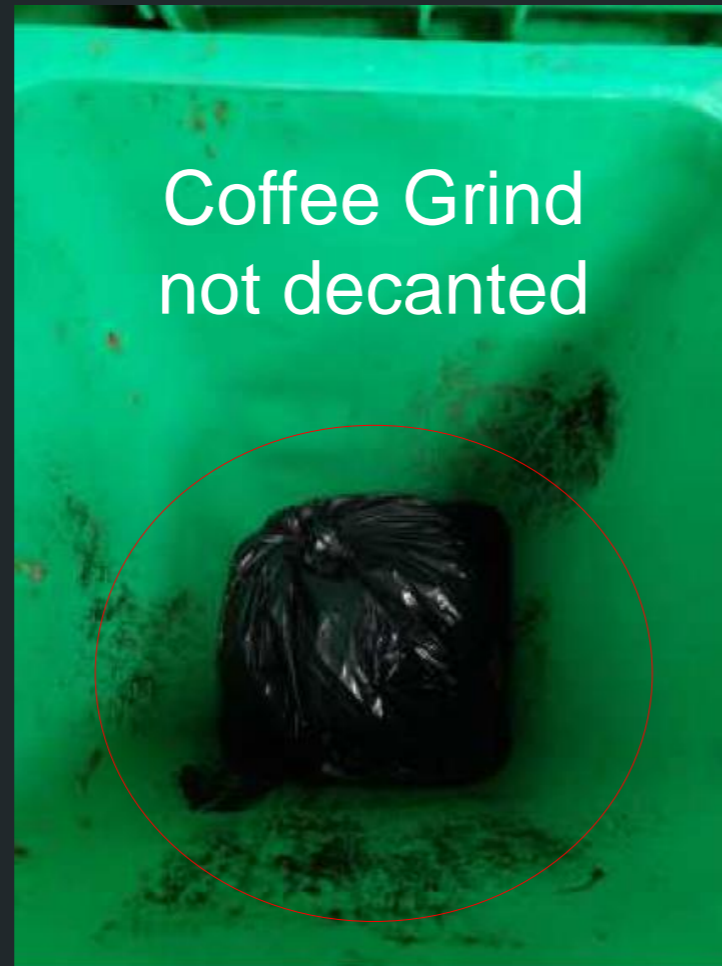
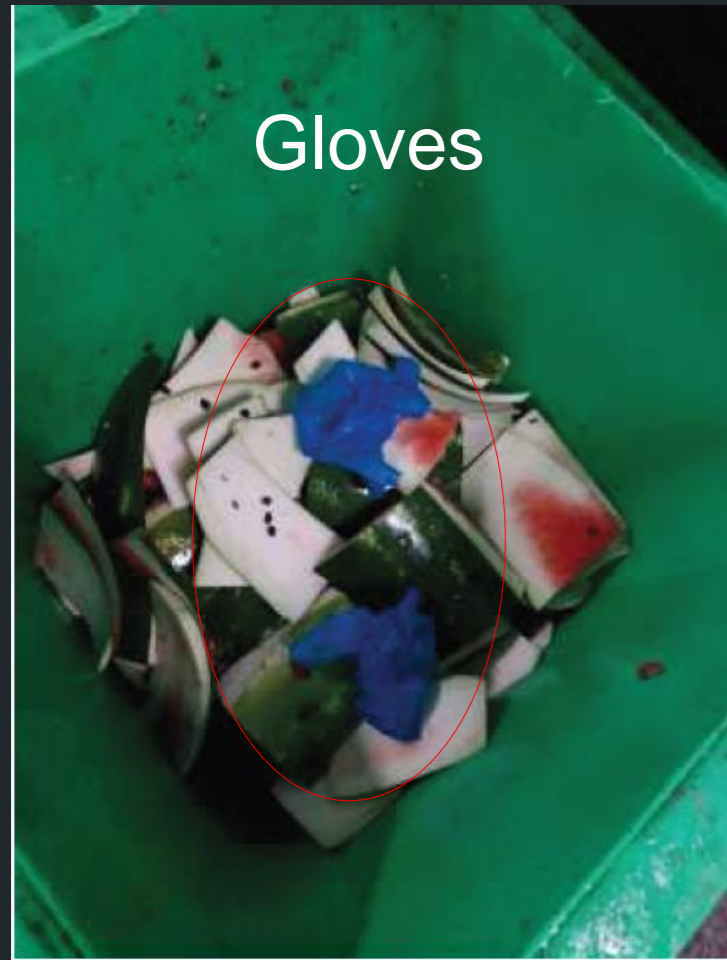


Hard Rubbish

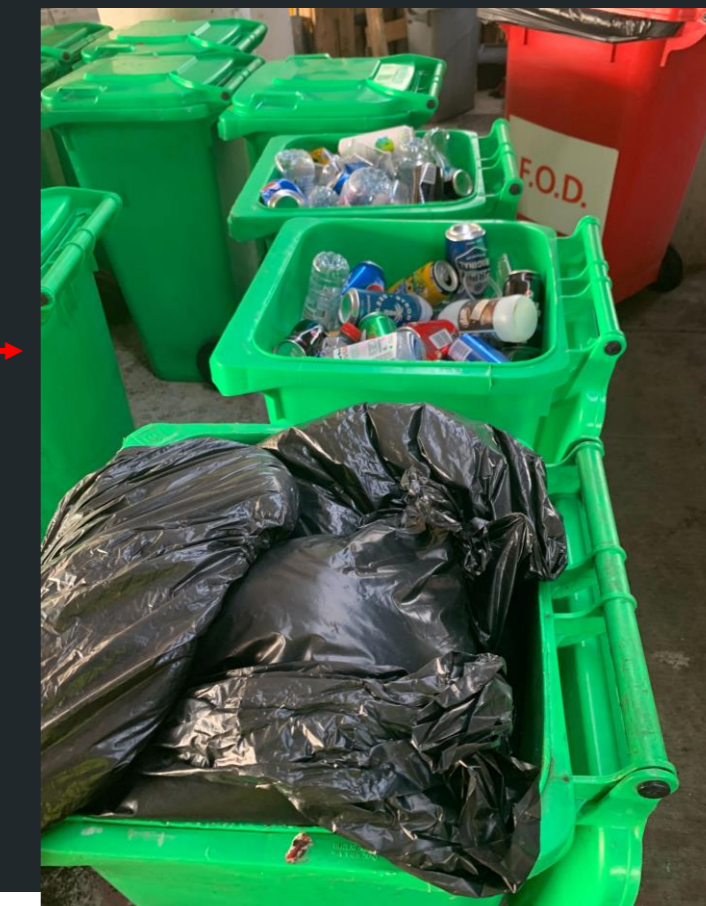


General Waste

Examples of contaminations



Wrong Bin use



Effects Poor Waste Management

Increased landfill negatively impacts communities and environments



Negative Impact on Human Health

Exposure to affected air, water or waste itself can cause illnesses such as skin irritations, respiratory issues, blood infections, reproductive problems and many other harmful diseases.



Negative Impact on Animals & Marine Life

Poorly disposed waste is absorbed by the soil which contaminates the land and marine ways.
Dead animals and marine life feeds disease carrying mosquitoes and then further infest our environment by spreading infection.



Soil Contamination

Plants grown in contaminated soil will absorb the hazardous matters.
Contamination maybe plastics, hazardous chemicals heavy metals, pesticides, etc.
Humans or animals then feed off contaminated plants causing health issues



Water Contamination

Water is essential for survival.
Contaminants get dissolved in water from toxic seeps into waterways causing damage to marine life and humans.



Air Pollution

When paper and plastic are burned at the landfill, the chemicals along with methane gas are released which accumulate and deplete the ozone layer.
Human also breathe in polluted air affecting their health.



Extreme Climate

Harmful greenhouse gases (GHG) are created from decomposing waste.
GHG causes adverse weather reactions.
Global warming effect causing anything from acid rains to severe hail storms.

Melbourne Airport Terminal Waste Streams

General Waste / Landfill	Co-mingle Recycling	Organics	Paper and Cardboard	Priority Waste / Industrial Waste**
<ul style="list-style-type: none"> ✓ General waste ✓ Soft Plastics* – plastic bags, wrap, packets ✓ Polystyrene, bubble wrap ✓ Broken glassware, mirrors, ceramics ✓ Cloths, plastic gloves ✓ Food packaging ✓ Paper Towel ✓ Coffee cups* 	<ul style="list-style-type: none"> ✓ Glass bottles and jars ✓ Steel and Aluminum Cans, Aluminum Foil (scrunched into balls) ✓ Hard plastic bottles and containers ✓ Milk Cartons ✗ General Rubbish ✗ Bagged materials/ bin liners ✗ Food Wrappers ✗ Food Products ✗ Containers with Liquid ✗ Coffee cups ✗ Flammable Waste (grease & oil) ✗ Prescribed or hazardous waste 	<ul style="list-style-type: none"> ✓ Fast Food ✓ Fruit and Veg ✓ Meat & Fish ✓ Baked Goods ✓ Dairy ✓ Tea & Coffee ✓ Napkins ✓ Small bones ✓ AS4736 compostable liner – only ONE per bin ✗ Large Bones ✗ Grease Trap Waste ✗ Garden Waste ✗ Compostable food packaging ✗ Bagged materials / bin liners ✗ Plastics, Glass & Metals ✗ Cleaning chemicals / Rags / Power towel 	<ul style="list-style-type: none"> ✓ Clean Paper ✓ Cardboard boxes (flattened) ✓ Magazines & Newspaper ✓ Envelopes ✗ Cardboard food packaging ✗ Polystyrene ✗ Bubble Wrap ✗ Coffee cups ✗ Milk cartons / Juice boxes ✗ Plastic Folders & Bound reports ✗ Waxed cardboard ✗ Paper towel & Tissue 	<ul style="list-style-type: none"> ✓ Grease Trap / oily rags and solvents ✓ Cleaning Chemicals & Rags with cleaning chemicals ✓ E-waste ✓ Quarantine & Biosecurity ✓ Contaminated Industrial Waste
<p>*Future waste streams</p>				<p>**separate waste bins should be available. If unsure contact IKON for more information</p>

Bin Rooms



What good looks like

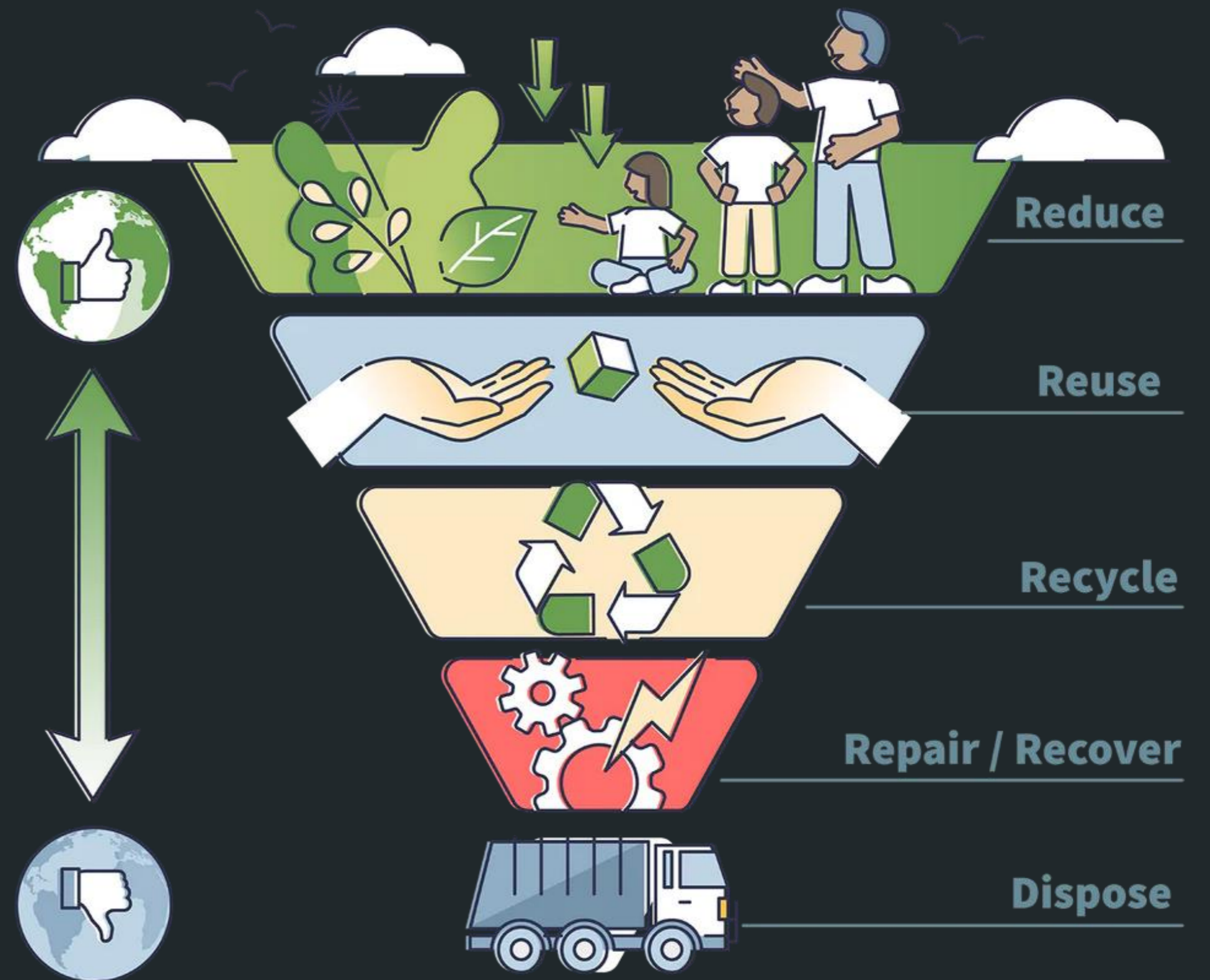


Image from "Cleanwithbrin.com"

What can you do to help?

- Integrate waste management into daily routine
- Safe handling and disposal of cleaning products
- Train your employees on the right use of waste streams
- Regular audits and inspections of your own waste disposal systems
- Encouraging a culture of responsibility
- Ask if unsure





Questions?